

KLINGER SPRAY SHIELDS

Protect critical flange connections

KLINGER FOR SAFETY

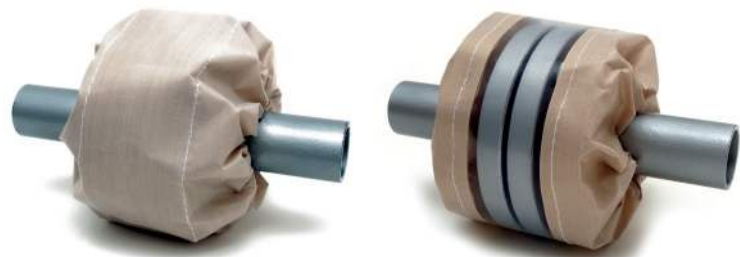


PERSON PROTECTION 

LEAK DETECTION 

CONTROLLED DISPOSAL 

ENVIRONMENTAL PROTECTION 



- » Recommended protection for critical flange connections
- » Reduce the chance of calamities
- » Optimal Safety for your employees

REDUCE THE CHANCE OF INJURIES

With increasing attention to the environment, prevention of leaks or flange joints has become an important focus of attention for the gasket industry.

KLINGER sees this problem and already offers personalised support in advance (correct material selection, assembly, inspection, training, etc.) to prevent or resolve problems later.

In many applications, flange connections such as aggressive chemicals, thermal oils or steam flowing under high pressure can be dangerous. These are the “critical flange connections”, which can cause disastrous consequences.

In the case of leakage under pressure, so-called “sprayers” are created. Personnel passing through or nearby can be injured. Chemicals can also be released into the environment.

To minimize damage caused by the spread of harmful substances, we recommend the installation of spray shields. These guards are easy to install and available in different versions for different application areas.

Spray shields serve both personal protection, leakage detection, environmental protection and controlled disposal of hazardous / chemical substances.

Manufactured in PP, PE, PVC, PTFE or metal, depending on the process media

TEXTILE SPRAY SHIELDS

Acids (sulphur, salt, nitric, phosphoric acid)

Hydrogen fluoride

Solvents

Ammonia

Peroxides

Glycol

METAL SPRAY SHIELDS

Steam

Thermal Oils

Hydraulic Oils

Gases

High temperature applications



TYPES OF SPRAY SHIELDS

PP, PE, PVC, PTFE or metal variations



FG-PTFE TYPE

- » Cover composed of fully PTFE impregnated fiberglass
- » Transparent window of ETFE
- » Stitching and cords fully impregnated with PTFE
- » Spray shields use double stitching for optimum strength



TEXTILE FG-PTFE

- » Impregnated fiberglass
- » Unique strength properties
- » Chemical resistance
- » Temperature from -200 to 250°C

CONFIGURATIONS

- » Standard
- » With litmus detection
- » With window
- » With drain connection



VALVE SHIELDS FG-PTFE

- » Impregnated fiberglass
- » Unique strength properties
- » Chemical resistance
- » Temperature from -200 to 250°C

CONFIGURATIONS

- » Customisation for all types of valves

METAL

- » Material: stainless steel 316 or 304
- » Thickness: 0.6mm
- » High pressures and temperature

CONFIGURATIONS

- » With or without drain connection
- » With spacers (so that the shield is not in direct contact with the flange)

